

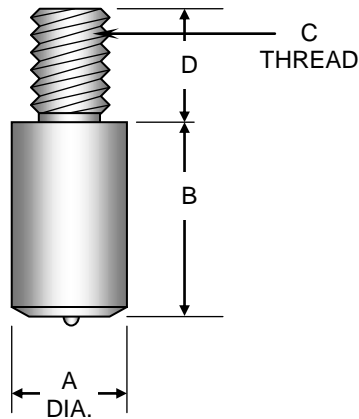
Cutlass Fasteners, Inc.

83 Vermont Ave., Unit 6, Warwick, RI 02888
 Tel: (401) 732-6333 Fax: (401) 732-6336
 cutlass-studwelding.com

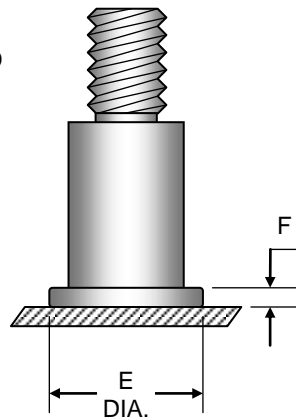
Stud Welding...

- Fasteners
- Equipment
- Service

ARC SHOULDER STUDS



BEFORE WELD



AFTER WELD

A Ø	E Ø	F	FERRULE
1/4	23/64	7/64	FB-08
5/16	25/64	7/64	FB-10
3/8	7/16	1/8	FB-12
1/2	19/32	5/32	FB-16
5/8	51/64	3/16	FB-20
3/4	15/16	1/4	FB-24

DIAMETER	B (MIN.)	C (MAX.)	D (MAX.)
1/4	5/16	8-32 UNC	1/2
5/16	3/8	10-24 UNC 10-32 UNF	
3/8		1/4-20 UNC	1.0
1/2	1/2	3/8-16 UNC	1.1/4
5/8	5/8	1/2-13 UNC	1.1/4
3/4		5/8-11 UNC	

“B” dimension is length before weld
 Studs 1/2" diameter and below will be 1/8" shorter after weld.
 Studs 5/8" diameter and larger will be 3/16" shorter after weld.

Non-standard diameters and/or lengths are available by special order....minimum order quantities may apply.